
2017 MCA Summary

August 7, 2017

Lakeville Area Public Schools continued strong academic achievement in 2017 with proficiency rates well above state averages.

- Lakeville North High School showed a notable increase in reading proficiency.
- Christina Huddleston Elementary School had strong increases in both math and reading proficiency.
- Eastview Elementary School achieved a 91 percent proficiency rate in mathematics.

The district also identified areas of focus for the 2017-18 school year.

- Improving flat year-to-year proficiency trends.
- Closing the achievement gap.
- Improving notable downturns in several elementary school math outcomes.

Dr. Emily McDonald
Executive Director of Teaching and Learning

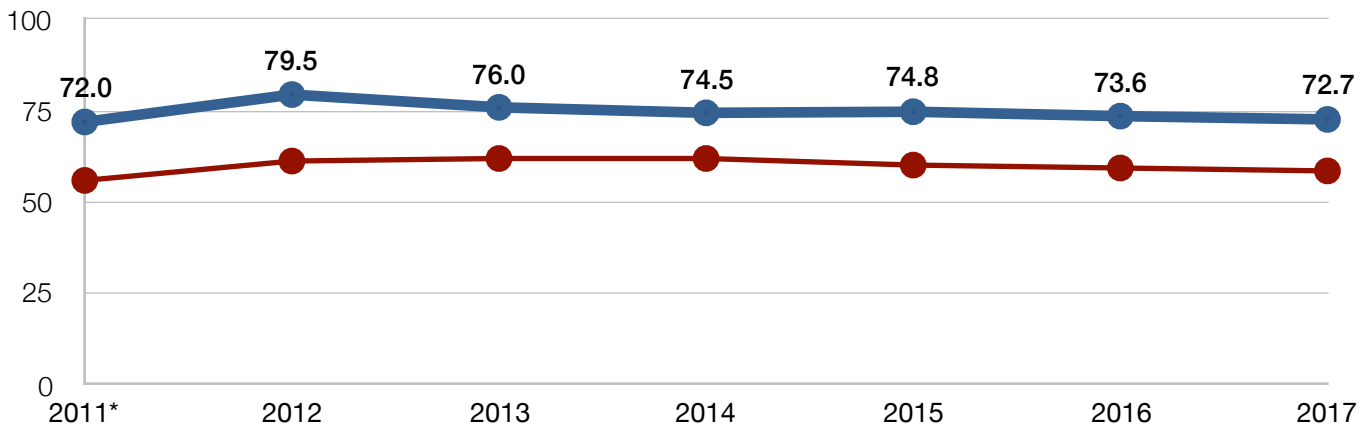
Dr. Andrew Barron
Director of Data Analytics



ALL GRADES - MCA-III PROFICIENCY

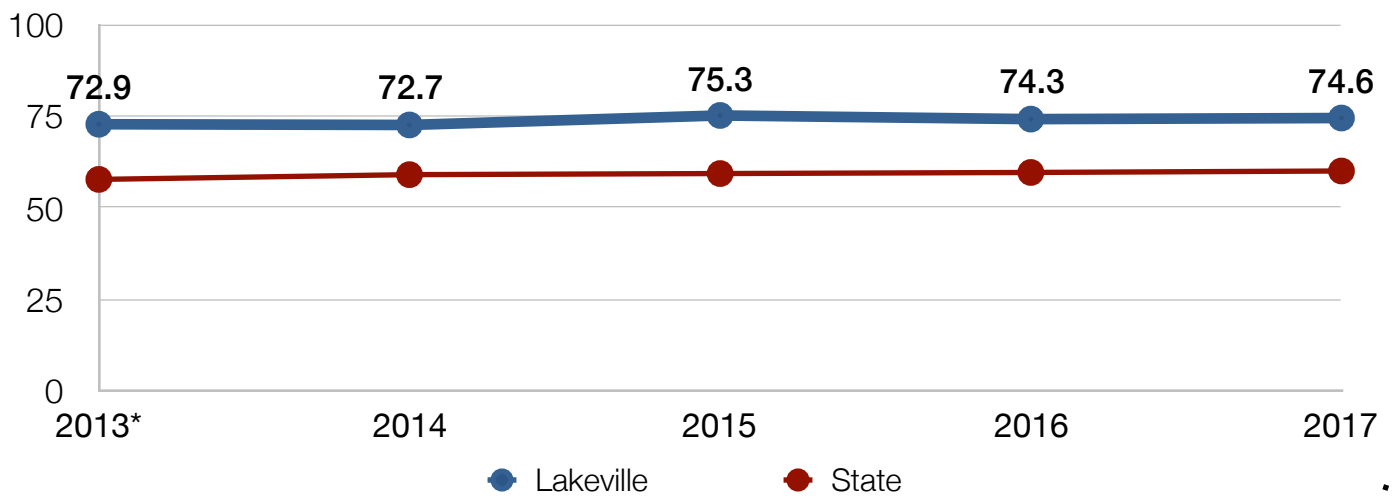
Year	Lakeville MATH	State MATH	Lakeville READ	State READ
2013	76	62	72.9	57.8
2014	74.5	62	72.7	59.1
2015	74.8	60.2	75.3	59.4
2016	73.6	59.4	74.3	59.7
2017	72.7	58.6	74.6	60.1

Mathematics - MCA All Grades



*2011 was the first year of a new revision of the MCA Math test.

Reading - MCA All Grades

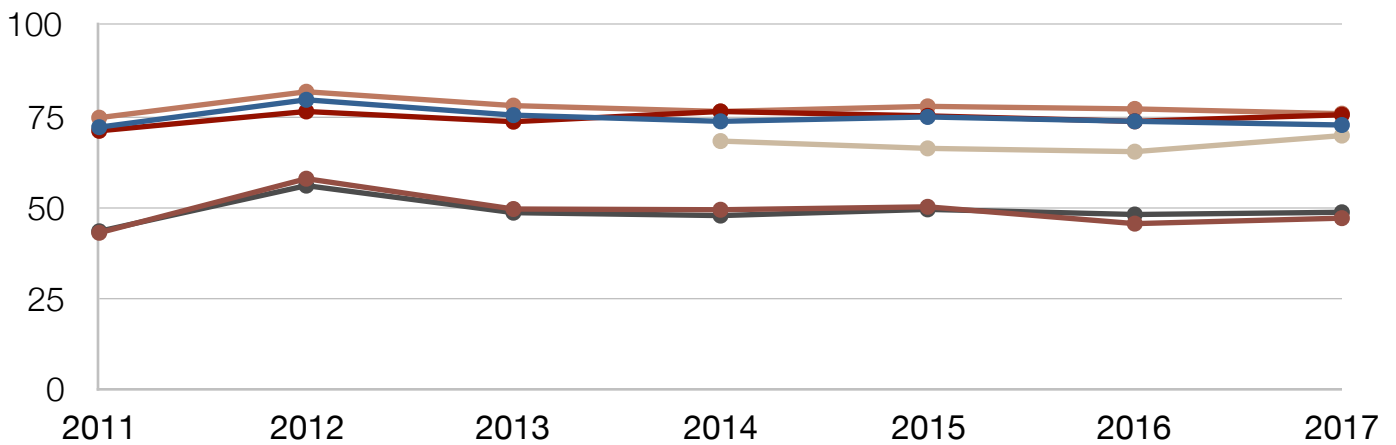


*2013 was the first year of a new revision of the MCA Reading test.

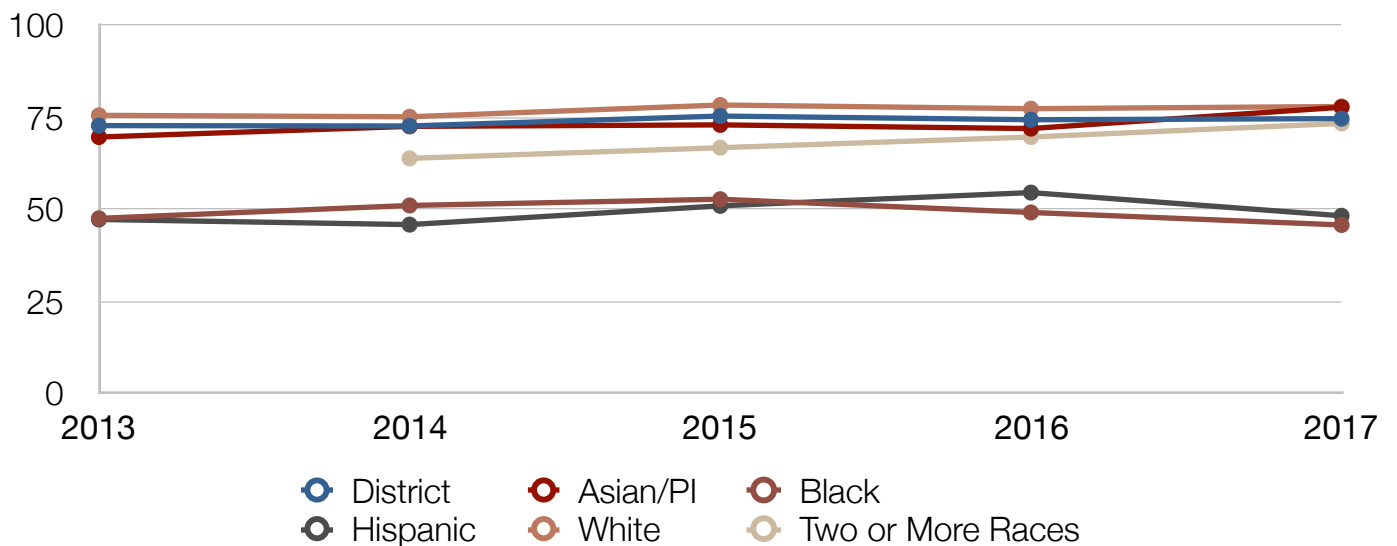
ALL ASSESSMENTS PROFICIENCY BY DEMOGRAPHIC 2017

	District	Asian	Black	Hisp	White	Two or More Races	SpEd	Non Sped	FRP	Non FRP
Math	72.6	75.4	47.1	48.7	75.7	69.7	42.4	77.5	46.9	77.1
Read	74.6	77.5	46.8	48.2	77.9	73.6	44.6	79.4	49.2	79.2

Math Performance by Student Group



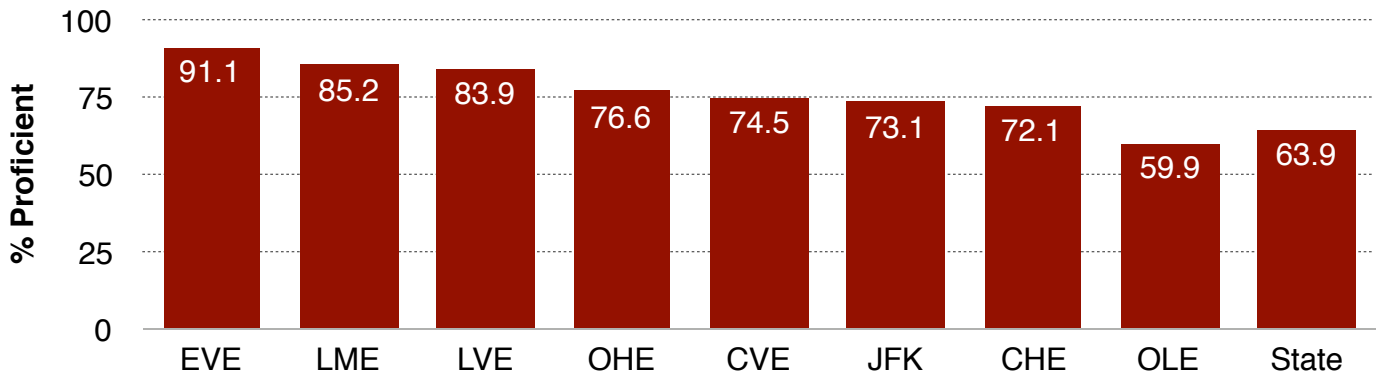
Reading Performance by Student Group



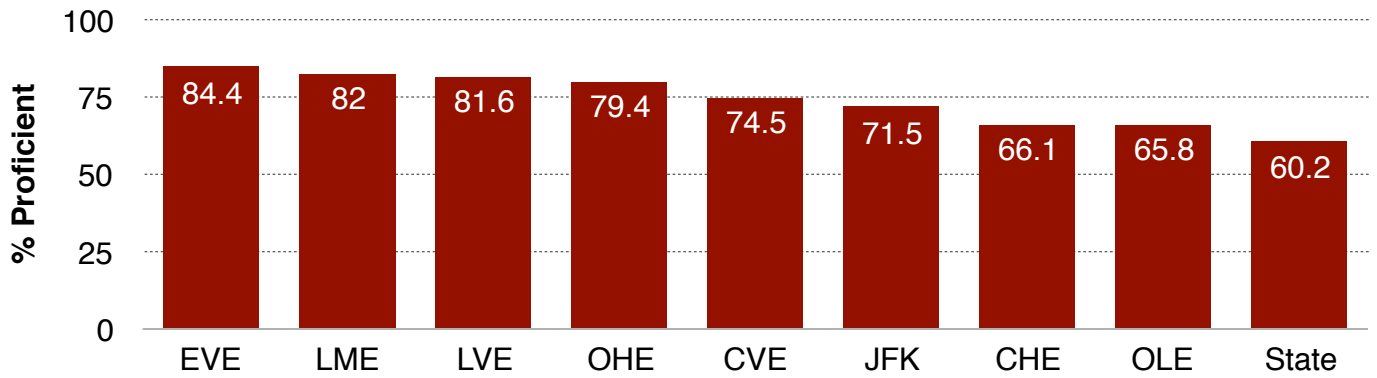
MCA-III PROFICIENCY BY SCHOOL: ELEMENTARY

	CHE	CVE	EVE	JFK	LME	LVE	OHE	OLE	State
Math	72.1	74.5	91.1	73.1	85.2	83.9	76.6	59.9	63.9
Read	66.1	74.5	84.4	71.5	82.0	81.6	79.4	65.8	60.2

2017 MCA-III Math



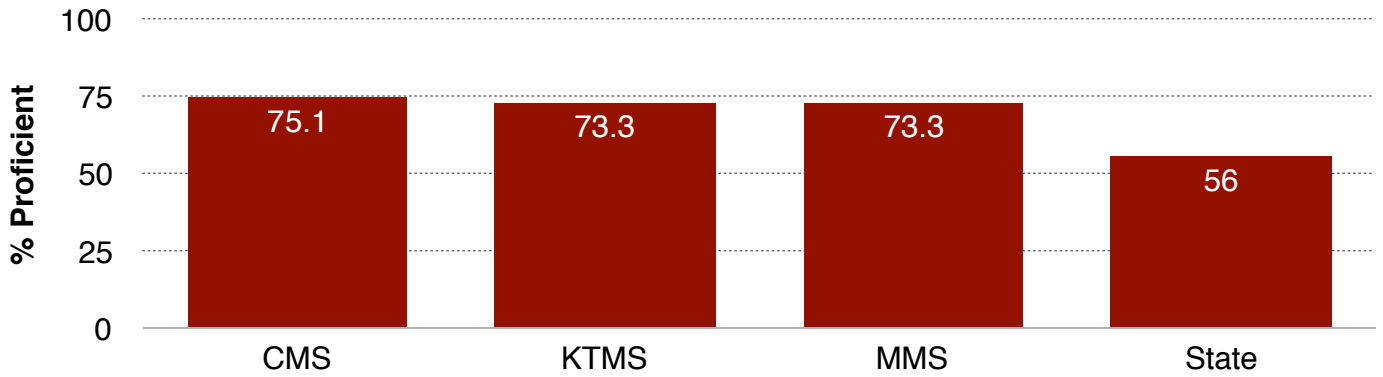
2017 MCA-III Read



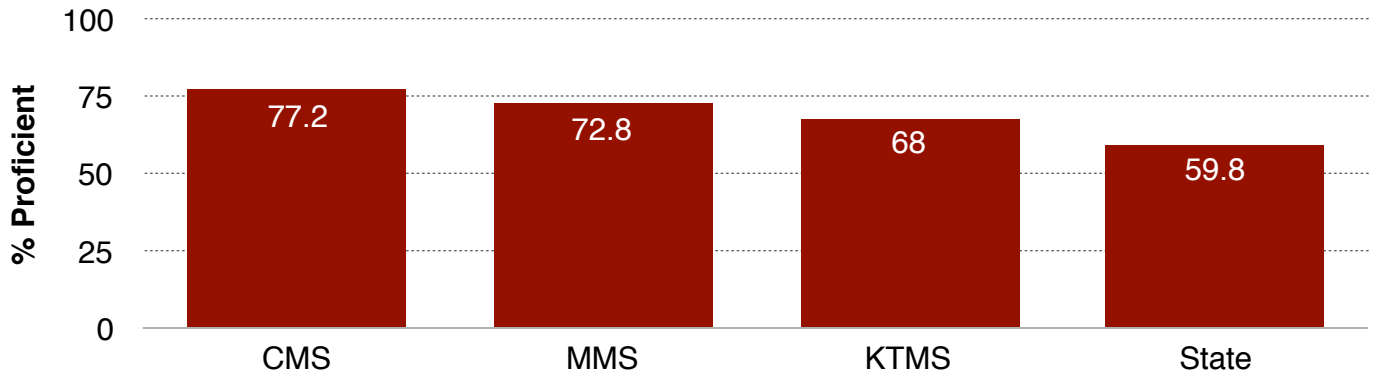
MCA-III PROFICIENCY BY SCHOOL: MIDDLE SCHOOL

	CMS	KTMS	MMS	State
Math	75.1	73.3	73.3	56.0
Read	77.2	68.0	72.8	60.2

2017 MCA-III Math



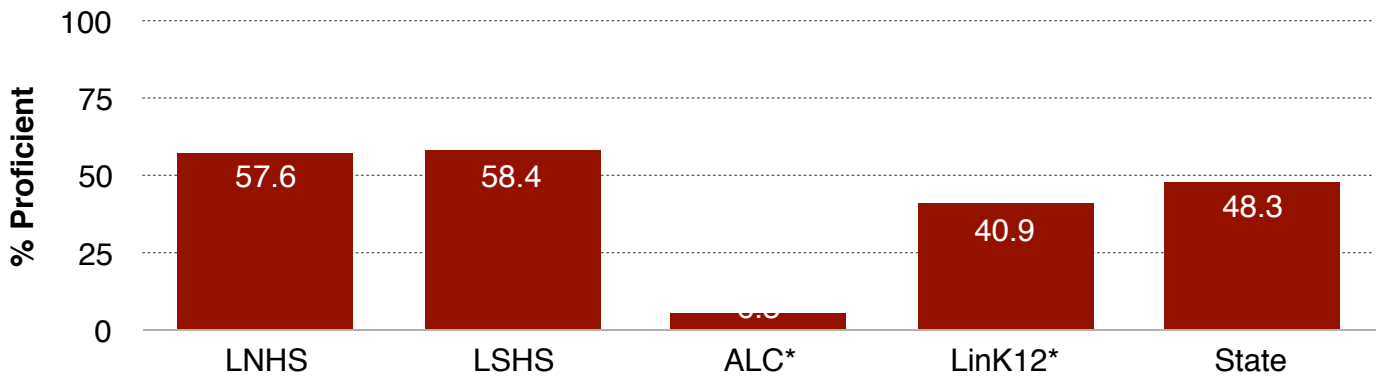
2017 MCA-III Read



MCA-III PROFICIENCY BY SCHOOL: HIGH SCHOOL/LINK¹²

	LNHS	LSHS	ALC*	LinK12*	State
Math	57.6	58.4	6.3	40.9	48.3
Read	76.4	72.7	8.3	85.0	60.3

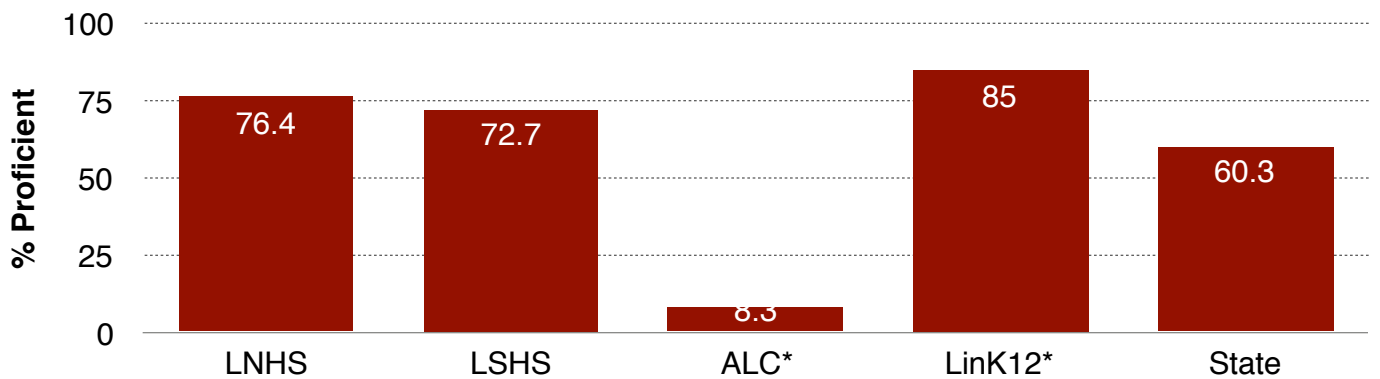
2017 MCA-III Math



*ALC represents 32 students across grades 6-11

*LinK12 represents 22 students across grades 3-11

2017 MCA-III Read



*ALC represents 12 students across grades 6-10

*LinK12 represents 20 students across grades 3-10