

2013 ISD194 Academic Fast Facts

IMPORTANT

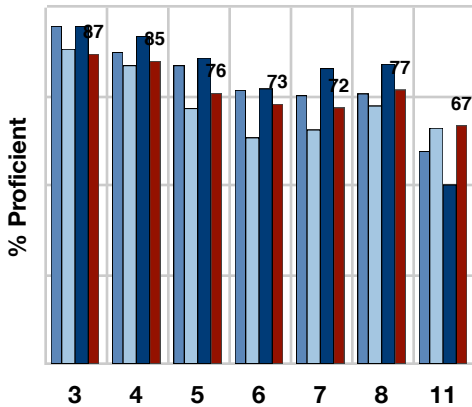
- MONITOR STUDENT PROFICIENCY
- IDENTIFY AREAS OF STRENGTH AND WEAKNESS
- INFORM INSTRUCTION



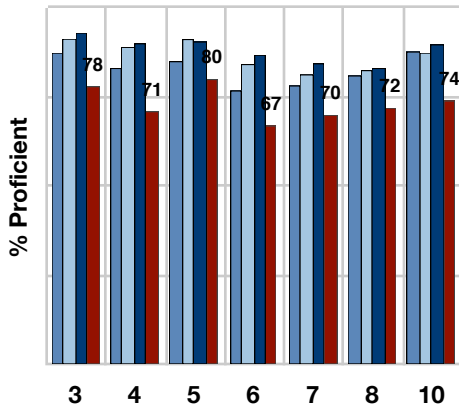
Lakeville Area Public Schools continually strives to improve the use of standardized and teacher-developed assessments. Our goals are to inform sound curriculum and instructional decisions, increase overall achievement levels, and better meet the needs of each student in our schools.



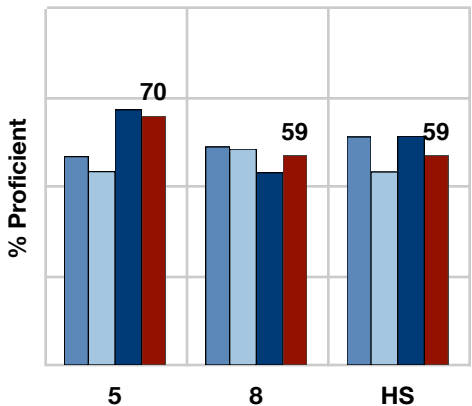
MATH MCA BY GRADE



READING MCA BY GRADE

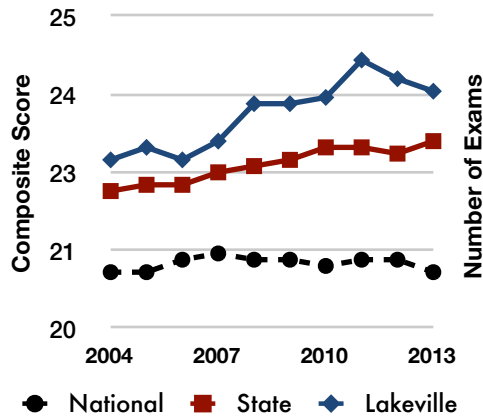


SCIENCE MCA BY GRADE

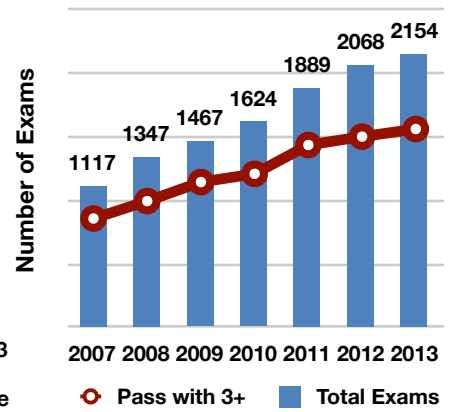


■ 2010 ■ 2011 ■ 2012 ■ 2013

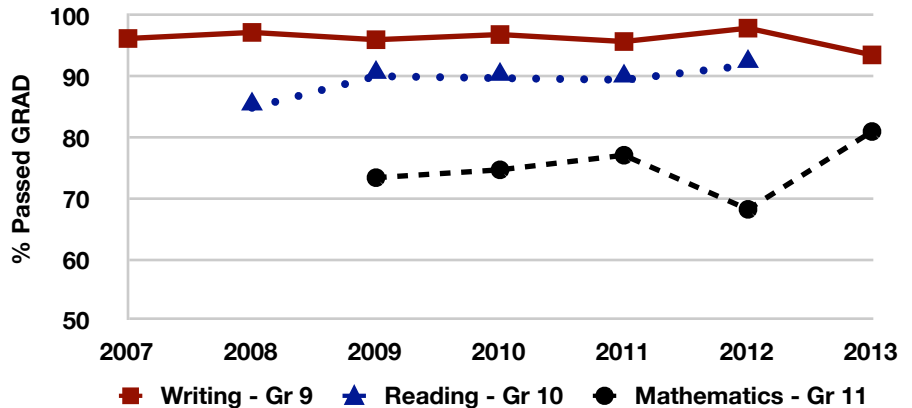
ACT PERFORMANCE



ADVANCED PLACEMENT



GRAD ASSESSMENT PERFORMANCE



SUMMARY

2013 PERFORMANCE

Lakeville Area Public Schools earned high levels of proficiency in Reading and Mathematics in 2013. Student performance outpaced the State average and was comparable to other high-achieving metropolitan districts.

While we are very proud of these achievement levels, we fully recognize and embrace the fact that there continues to be room for growth. We will continue to focus on raising the achievement of all students during the 2013-14 school year.

